

ICTUSnet FINAL DISSEMINATION EVENT

July, 29th 2021 | Online Session | Barcelona | Catalonia

Project funded by the Interreg Sudoe Programme
through the European Regional Development Fund



Partners:





**Network of collaboration between different
regions of Southwest Europe
to create research infrastructures
that incorporate
innovative data analysis technologies
to improve stroke care systems**





Specific objectives



Big data

Use of innovative big data technologies available to extract and analyze information and explore new perspectives on stroke care strategies.



Strategy

Study, agree and plan measures to enhance effectivity in stroke care plans on acute and chronic phases, to reduce its impact.



International collaboration

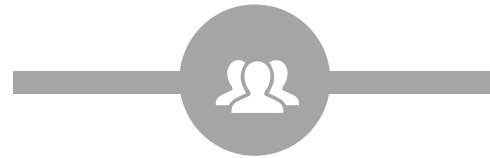
Foster international and regional cooperation by exchanging good practices, peer learning and implementing a common advanced training program.



Network



6 SUDOE regions
Consortium



34
Associate partners

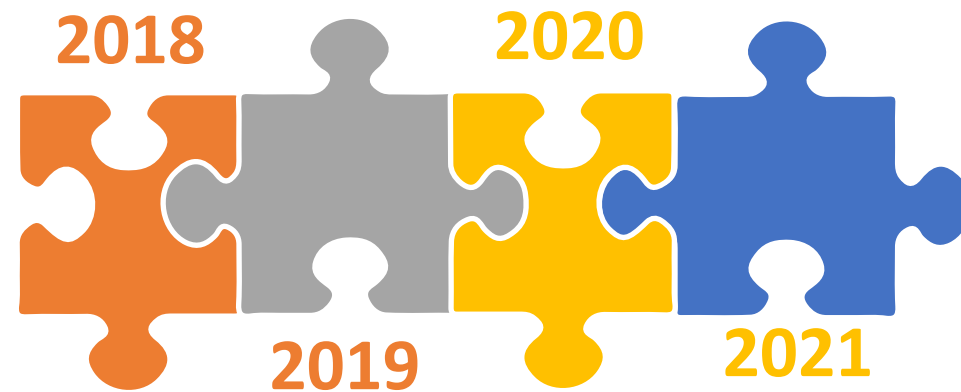


1,3M €
Budget



20M
Impact

ICTUSnet



ICTUSnet

Salut/ Agència de Qualitat i Avaluació Sanitàries de Catalunya

 **Barcelona Supercomputing Center**
Centro Nacional de Supercomputación

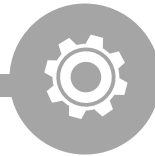
 **Instituto Aragonés de Ciencias de la Salud**

Project Leadership



AQuAS

Assessment, big data,
Innovation, health
Registries, Stroke Program



BSC

Text mining, Natural
language processing



IACS

Assessment, Innovation,
Best practices



ICTUSnet


G CONSELLERIA
O SALUT
I FUNDACIÓ
B INSTITUT
/ INVESTIGACIÓ
SANITÀRIA
ILLES BALEARS


NAVARRABIOMED
FUNDACIÓ MIGUEL SERVET

 Fundació **Ictus**



IdisBa

Stroke care, Innovation,
registries



FMS

Stroke care, Big Data,
registries



Fundació Ictus

Patient experience,
research

ICTUSnet



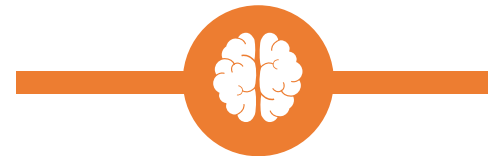
ARS NORTE
Administração Regional
de Saúde do Norte, I.P.



ARSN
Health services,
stroke program



CHUM
Stroke care, Network

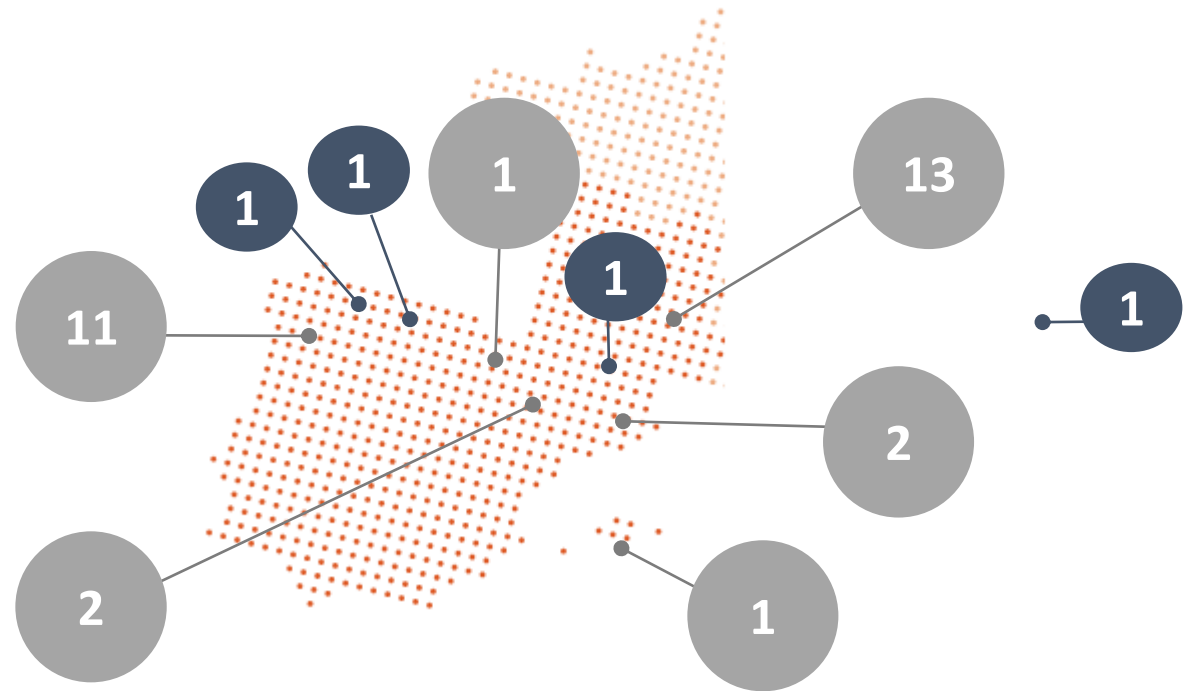


CHUT
Stroke care, Network



Open Evidence
Research, decision
making

ICTUSnet



WP1

Regional stroke registries
+
Integrated Platform

WP2

Artificial intelligence tools
(text and images)

WP3

Analysis and benchmarking of stroke healthcare pathways

WP4

Transfer of knowledge

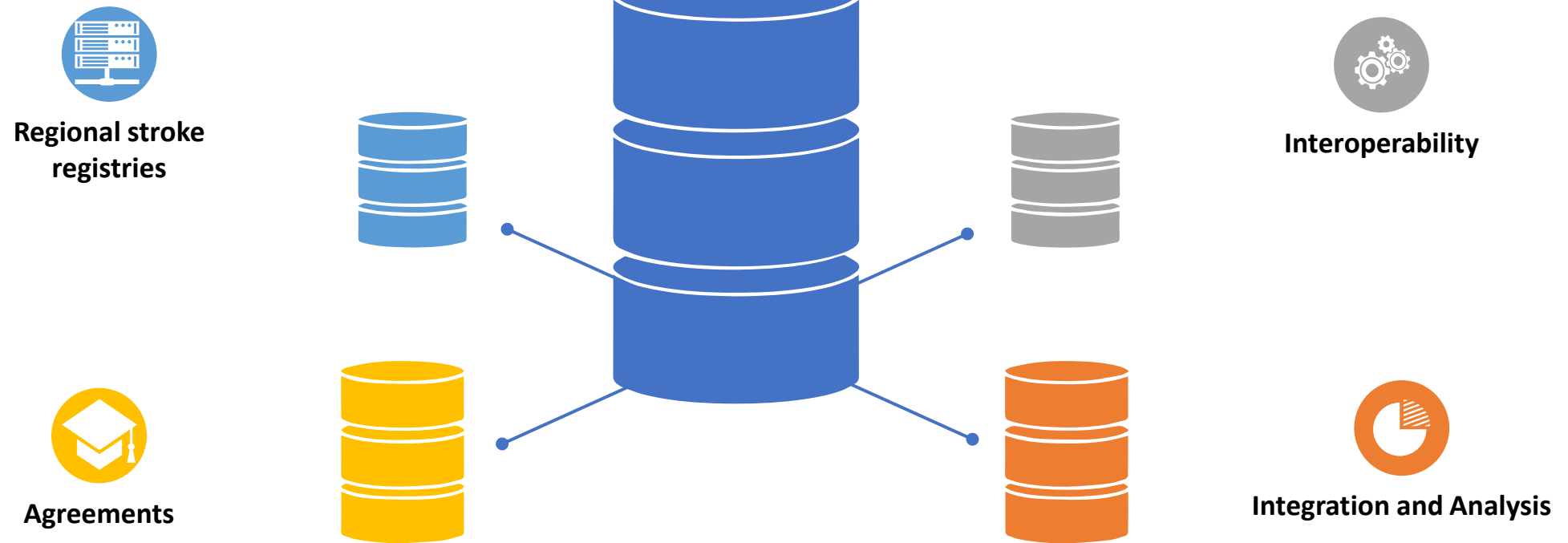
WP5

Exchange of knowledge,
collaboration and mutual learning

WP1

**Regional
and
central
stroke registries**

Central registry

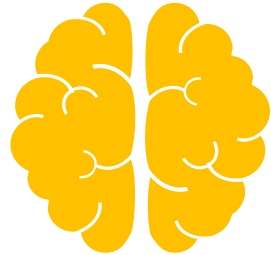


WP2

**Artificial
intelligence
tools**

Text mining software

Discharge reports of stroke episodes



Deep learning software

Analysis of brain images in acute phase



WP3

Analysis and
benchmarking
of stroke
healthcare
pathways

ICTUSnet



Evaluation framework

Indicators according
international consensus
adapted to SUDOE regions



Primary prevention and Campaigns of awareness

Healthy lifestyle regional
plans and programs and
stroke awareness campaigns



Acute phase

Process mining
regional health databases
Good practices

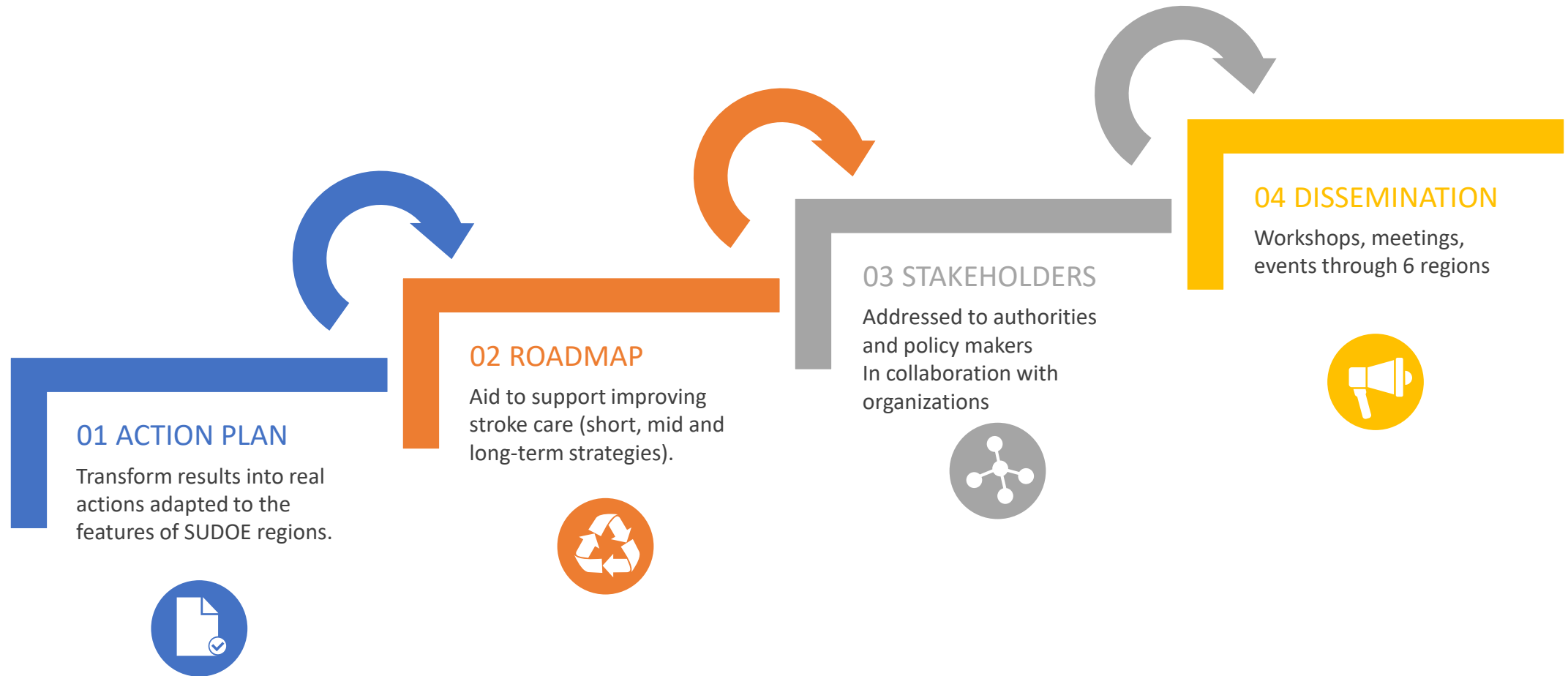


Rehab and follow-up

Mapping of resources and
indicators

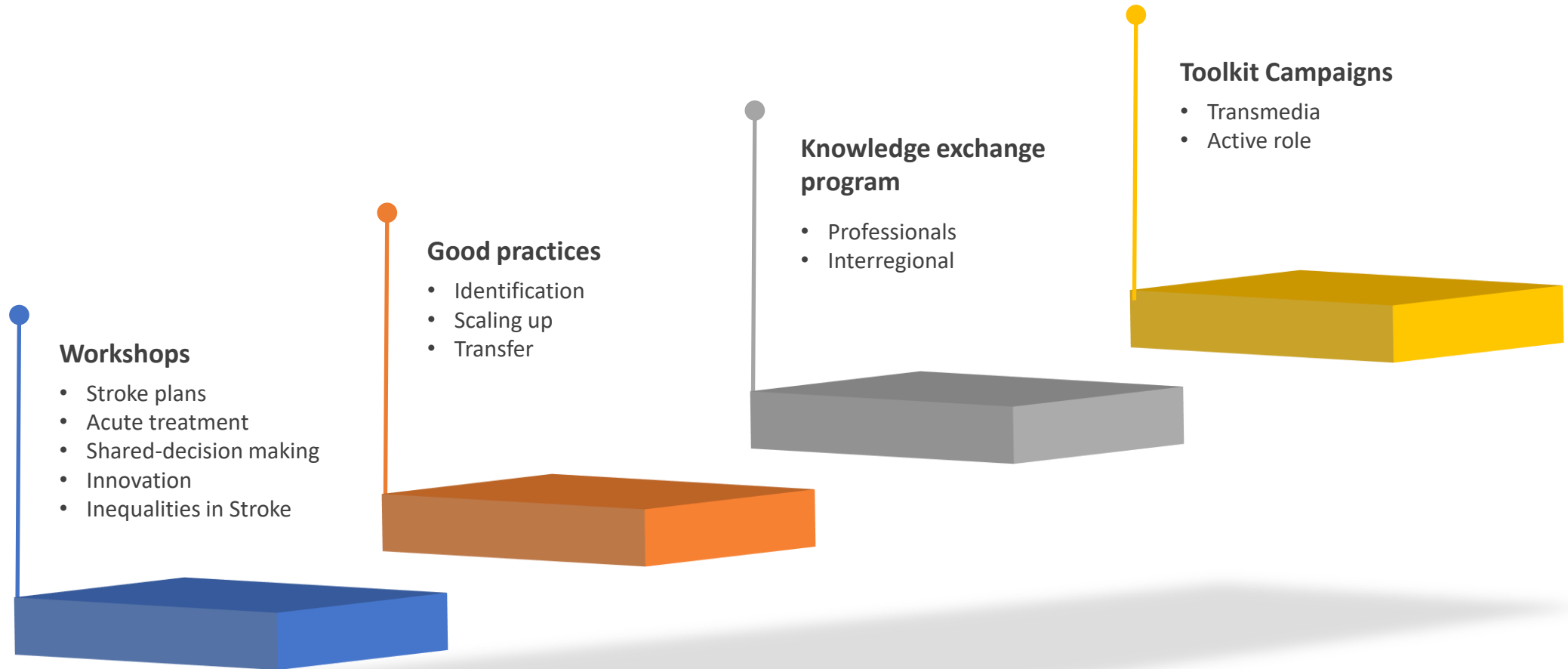
WP4

**Transfer
of
knowledge**



WP5

Exchange of
knowledge,
collaboration and
mutual learning



WP1

Integrated
platform

ICTUSnet



Portal Web with integrated data





THANK YOU